

A man with a beard and safety glasses is looking intently at a piece of industrial machinery. He is wearing a blue polo shirt with 'AMRC BOEING' and a logo on the sleeve. The background is a blurred factory setting. The image has a semi-transparent grey overlay with white text and decorative purple diagonal lines in the top-left and bottom-right corners.

**MAKE IN INDIA,
DESIGN & DEVELOP IN
THE SHEFFIELD CITY REGION**

**Sheffield
City Region**

Sheffield City Region

Cutlery to Cutting Edge

SHEFFIELD HAS LONG BEEN KNOWN AS THE CENTRE OF MANUFACTURING EXCELLENCE AND FOR GOOD REASON

Innovations at the start of the 20th Century, such as stainless steel and even earlier advances in the crucible method of manufacturing, placed Sheffield on a world stage and established our city as a leader of the Industrial Revolution.

Did you know, Sheffield was famous for its cutlery centuries before this?

Early examples of beautifully crafted pieces still exist and Sheffield remains renowned for excellence in cutlery manufacturing.

Building on this heritage with best of breed innovation engineering means Sheffield has established its rightful place at the forefront of cutting-edge advanced manufacturing and technology for Industry 4.0.

Made in Sheffield is still a sign of quality throughout the world.

Sheffield City Region

LEGACY TO LEADING EDGE

We played a crucial role in the first Industrial Revolution, whilst bringing Advanced Manufacturing, Medical, Energy and Transport Technology into the 21st Century.

SHEFFIELD IS KNOWN FOR INNOVATIONS THAT CHANGED THE WORLD

From 1860 we were the first to armour-plate vessels, such as HMS Warrior, fast forward to 2001 when we created the **Advanced Manufacturing Research Centre** with the University of Sheffield and **Boeing**. Here, pioneering manufacturing techniques are powering jet engine production and a Virtual simulation model facility is increasing productivity by up to 50% for Boeing.

Sheffield has always been a place to get things done and in 2008 **Rolls-Royce** opened its Factory of the Future and **McLaren** established its Automotive Composites Technology Centre in 2018. The architecture for the next generation of electrified supercars is being designed, developed and made here.

A REGION THAT TRULY COLLABORATES BETWEEN INDUSTRY, ACADEMIA AND THE LOCAL GOVERNMENT.

Sheffield takes a world-leading role in healthcare research and innovation.

Since 1841 Sheffield has been making tuning forks for pianos and aiding doctors' diagnostic hearing capabilities through to recent advances in diabetic neuropathy. This is testament to having some of the most advanced analytical tools, CT scanning and high-resolution metrology in the world.

From Precision and Reliability with **Additive Manufacturing** (3D) **Medical Prosthetics** to the first implantable **synthetic bone graft**. Plus, we were first in the world to bring artificial **hip joints with ceramic coating** to the market helping people regain mobility.

WE'VE BROKEN QUITE A FEW RECORDS IN THE REGION:

We're home to the world's oldest football club.

Be active amongst sporting stars in facilities which are a legacy from the London 2012 Olympic & Paralympic Games and home to ground-breaking global health research, innovations and new technologies. The outputs are improving quality of life for people around the world.

It's something Sheffield has been doing for a long time; Breaking world speed records new and old, with the World's fastest gravity powered sled. Who hasn't heard of the world famous locomotive, the Flying Scotsman? And the Mallard, which holds the world speed record. Both were designed and made in our region.

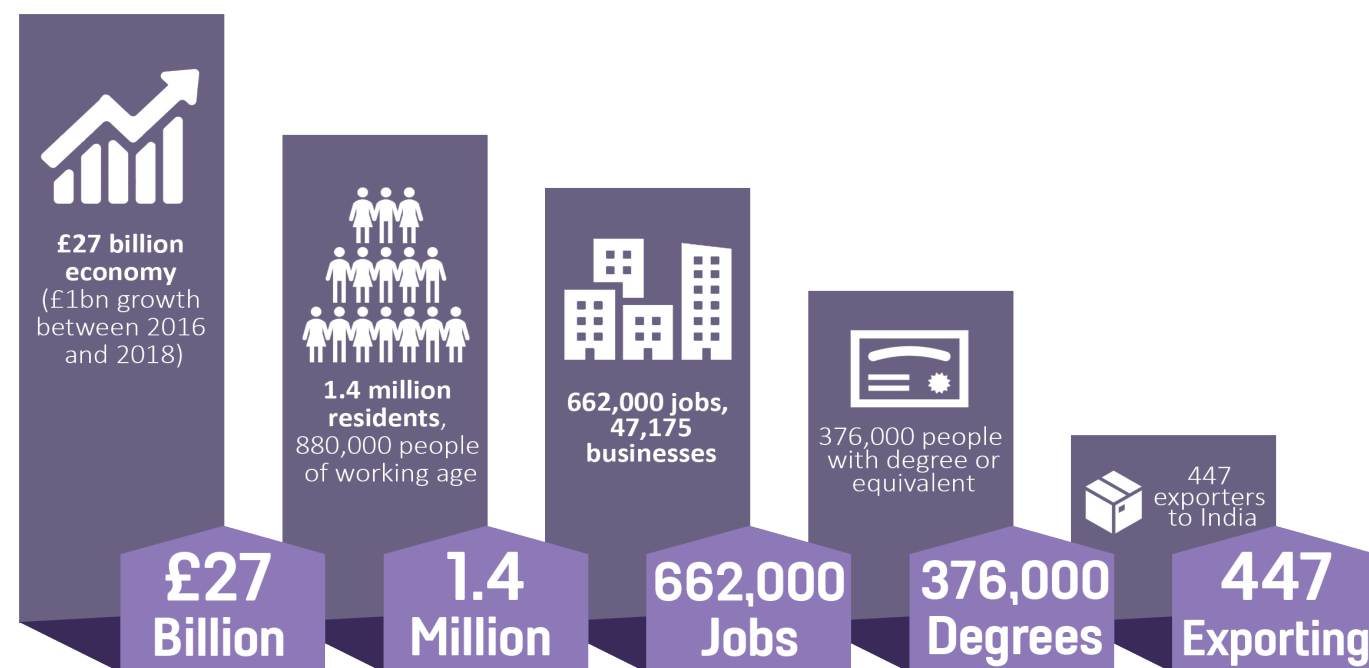
GREAT PLACE TO LIVE, WORK AND INVEST

Sheffield has much to offer too in terms of arts and culture.

The aptly named Crucible theatre complex, the largest in the UK outside of London, offers a vast range of shows and events throughout the year. And we stay true to our heritage with the most advanced titanium melting facility in Europe yet are proud to be one of the greenest cities in the UK.

Sheffield has always reached for the stars, too; Astronaut Helen Sharman, the first ever Briton in space was from the region - testament to our people being our strongest asset: we are hard wired for hard-work, resilience and innovation.

SHEFFIELD CITY REGION IN A SNAPSHOT



WHAT DOES THE SHEFFIELD CITY REGION HAVE TO OFFER INDIA?

We are a region that is embedded in the fabric of the modern world. Our products and technology are in bridges, railways, skyscrapers, nuclear power stations. In jet engines, cars, ships. In medical instruments and in planes. Innovators in Sheffield invented stainless steel and took it around the world.

That same spirit of endeavour, innovation and production attracted Rolls Royce, Boeing and McLaren and we are meeting the challenge of green technology by creating and engineering new materials that are lighter, stronger and more efficient to produce.

It is this ability to design, develop and distribute innovative solutions that we think positions us well for the future. And with that we have significant partnership potential for businesses and regions looking to tackle these same great challenges. We have a very simple mission.

We want to be more productive. More innovative. And easy to do business with. India, we would love to work with at all levels; we have a complementary set of assets and capabilities and some shared challenges.

Dan Jarvis, Mayor of the Sheffield City Region

OUR OFFER INCLUDES:

- Competitive property and employment costs.
- Well-qualified, skilled and committed workforce.
- A culture of innovation through research facilities and unrivalled university-industry partnerships.
- Excellent connectivity via local motorway, rail, port and air links.
 - UK's fastest growing airport - longest runway for specialist heavy and urgent cargo.
 - Reach 5 more airports within 90 minutes.
 - London in 90 minutes by train.
 - Daily freight services connect to local railport.
 - At the heart of the UK's road network.
 - 75% of the UK can be reached within a 4.5 hour HGV drive, access to Europe through the Humber ports.
- An extremely supportive commercial environment.

FIND US IN THE
HEART OF THE UK



DISCOVER THE CLUSTERS OF EXPERTISE, CENTRES OF EXCELLENCE AND WHOS LOCATED HERE

Cluster Capabilities:

Engineering and Materials
Digitisation and Engineering
Low Carbon and Engineering
Health and Wellbeing
Digital



Located in the heart of the UK,

We are a region renowned for our industrial heritage, but with a rapidly growing reputation for advanced manufacturing and engineering. We are driving growth by offering a wide range of investible opportunities, with a strong focus on innovation.

We encourage innovation-led economic growth by enabling industry leaders to collaborate with other entrepreneurs, innovators, academics and training providers to harness the benefits of clustering.

This practice of similar organisations being located close together to share knowledge, resources and research is a real strength of our region, particularly in the areas of Advanced Manufacturing and Health & Wellbeing.

Our AMID (**Advanced Manufacturing Innovation District**) is the UK's largest research-led advanced manufacturing cluster and adjacent business and science parks connect world-class capabilities and R&D assets in materials, clean energy and advanced wellness and is home to high-value businesses and skilled software engineers who are pushing the boundaries of digital efficiency and Industry 4.0.

Our Advanced Manufacturing cluster is based around the AMID. At the heart is the Advanced Manufacturing Park and the Advanced Manufacturing Research Centre, which have been driving high value innovative engineering, manufacturing research and skills development since the early 2000s.

The success of the AMID is based on the clustering of world-class manufacturing brands, such as McLaren, Boeing and Rolls-Royce.

Our Health & Wellbeing cluster comprises the Advanced Wellness Research Centre, Centre of Child Health and Technology, National Centre of Sport and Exercise Medicine, and National Centre of Excellence for Food Engineering. Hosted by the Sheffield Olympic Legacy Park and Sheffield Teaching Hospitals NHS Foundation Trust, it is an important centre of excellence for research into the health challenges that face the population on a local and global basis.

Sheffield City Region has an ambitious and ever-expanding digital sector with four key pillars of tech strength: 1 Industrial: Crossing the areas of technology and manufacturing. 2 Creative: Digital Film tech, Digital Media tech, Creative, Games tech, Art tech, Design tech and Entertainment. 3 EdTech / Learning: we are a key UK hub for education technology with 60% of school digital content made in Sheffield. 4 Mobility where digital and movement occurs; Transport, Robotics, Drone, and Health.

We're growing our economy by creating a broad and powerful culture in which businesses can become established, develop and thrive. By focusing on what we're good at, from advanced manufacturing through to healthcare and renewable energy, we're building a more prosperous place where people want to live, work and invest.

Sheffield City Region

Make in India, Design & Develop in the Sheffield City Region.

If you are looking to make an investment visit our interactive portfolio, which can be accessed at portfolio.sheffieldcityregion.org.uk, a user-friendly feature to visualise where investable opportunities are located.

If you are looking to relocate a business to the Sheffield City Region, we have developed 'Locate in the SCR', which can be accessed at locate.sheffieldcityregion.org.uk. By using Locate in the SCR, you will be able to answer fundamental questions, such as 'Is there suitable land or property available for a business there?'; 'Does the district have a market for my business to succeed?' 'Is there sufficient skilled labour?' and 'What are the salaries paid in that area for this industry?'.

Locate in the SCR enables users to 'drill down' to gain a true, impartial picture of the Sheffield City Region's towns and cities, including the workforce potential, their education and wages. The webtool brings vital sources of information together to enable you to make informed choices and clear recommendations, based on facts and evidence.

Sheffield City Region
Mayoral Combined Authority,
11 Broad Street West,
Sheffield, South Yorkshire,
S1 2BQ, UK

Follow us on social media:



www.linkedin.com/company/10393879



www.twitter.com/SCRInvest

www.scrinvest.com

PUBLICATION DATE 08.03.2021