

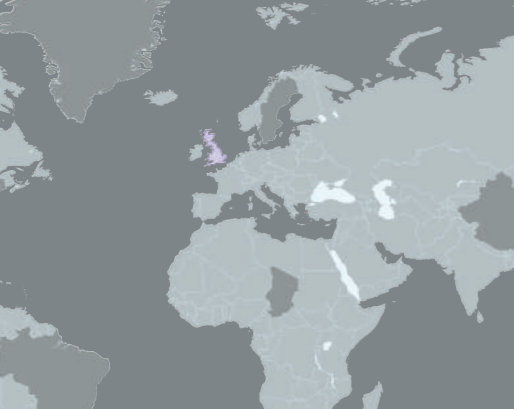


ADVANCED MANUFACTURING

MEDICAL TECHNOLOGIES

World class capabilities and global reputation for innovation, development, manufacturing and commercialisation of medical and healthcare technology solutions.

**Sheffield
City Region**
Inward Investment



Sheffield City Region



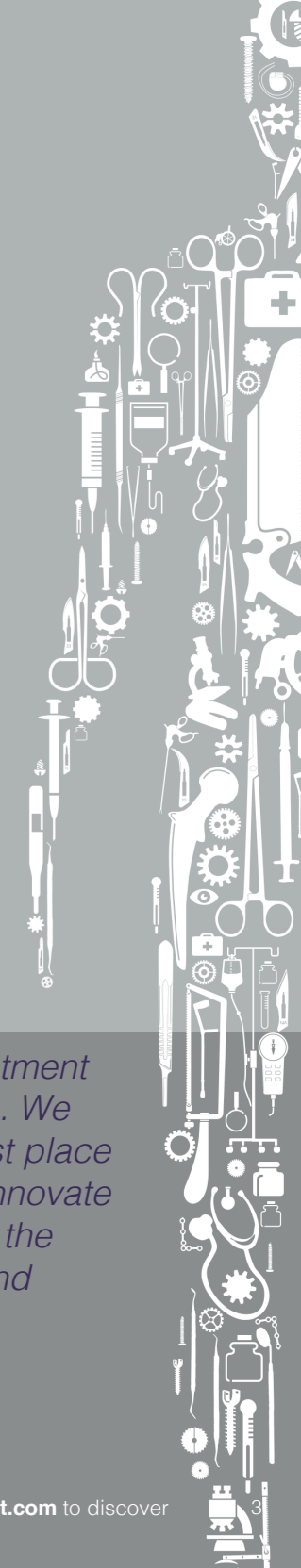
Advanced Manufacturing Innovation District (AMID).

World-class advanced technology bonds technical excellence, human excellence with global reputation.

The AMID is a 2,000-acre centre of innovation and business excellence in Sheffield City Region. It includes the UK's premier Advanced Manufacturing Park, creating the place for leading manufacturers to go for research, technology transfer, production, networking and industrial collaboration.

The AMID builds on over a decade of development, propelled by the University of Sheffield's Advanced Manufacturing Research Centre (AMRC) and a growing cluster of advanced manufacturing and technology firms.

Set to become the most advanced research and development centre for movement and physical activity in the world, the £14m Advanced Wellbeing Research Centre (AWRC) will form the centrepiece of Sheffield's Olympic Legacy Park – a joint venture between Sheffield Hallam University, Sheffield Teaching Hospitals NHS Foundation Trust and Sheffield City Council.

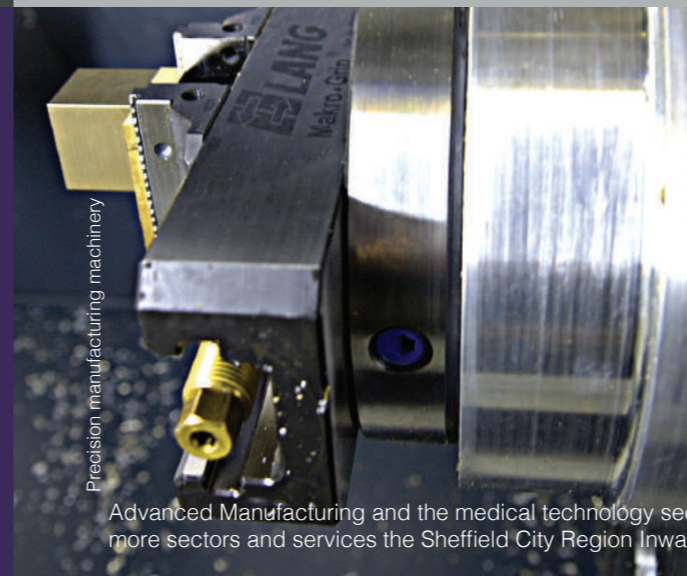


The Sheffield City Region is recognised worldwide for its expertise in high precision engineering, metals and alloy production, high quality design and manufacturing of products for a wide range of global industries.

The manufacturing sector in the Sheffield City Region has expertise in the design and implementation of innovative materials and manufacturing technologies and techniques to create solutions required by the needs of high-precision industries.

Serving the supply chains of many international manufacturing and engineering market sectors, including the medical technologies, aerospace, automotive, civil nuclear, offshore wind, low carbon energy, defence, and oil and gas industries.

This expertise is the foundation on which much of the UK's wealth creation is built.



Precision manufacturing machinery

"We have made significant investment in purpose built modern facilities. We are confident Sheffield is the best place for our company to continue to innovate and succeed as we benefit from the significant university expertise and regional networks."

**Keith Jackson, MD,
JRI Orthopaedics Ltd.**

Advanced Manufacturing and the medical technology sector is just one of our specialist areas, simply visit scrinvest.com to discover more sectors and services the Sheffield City Region Inward Investment team can support.

Sheffield City Region supports the medical technology sector from research through to commercialisation

This is a place where medical technology businesses thrive, resulting in one of the UK's largest clusters of orthopaedic and medical device companies.

Your business can access world class expertise for the design and implementation of novel materials to create 'user led' healthcare solutions. 'Made in Sheffield' and 'Sheffield Steel' are synonymous with quality and high standards, and Sheffield's heritage of over 200 years in pioneering steel making and engineering excellence has resulted in a culture of innovation, fundamental to the development of its modern manufacturing economy.

The Region's economic priority is to attract and retain business investment internationally and from the UK that brings jobs, improves regional prosperity and enhances the welfare of vibrant communities.

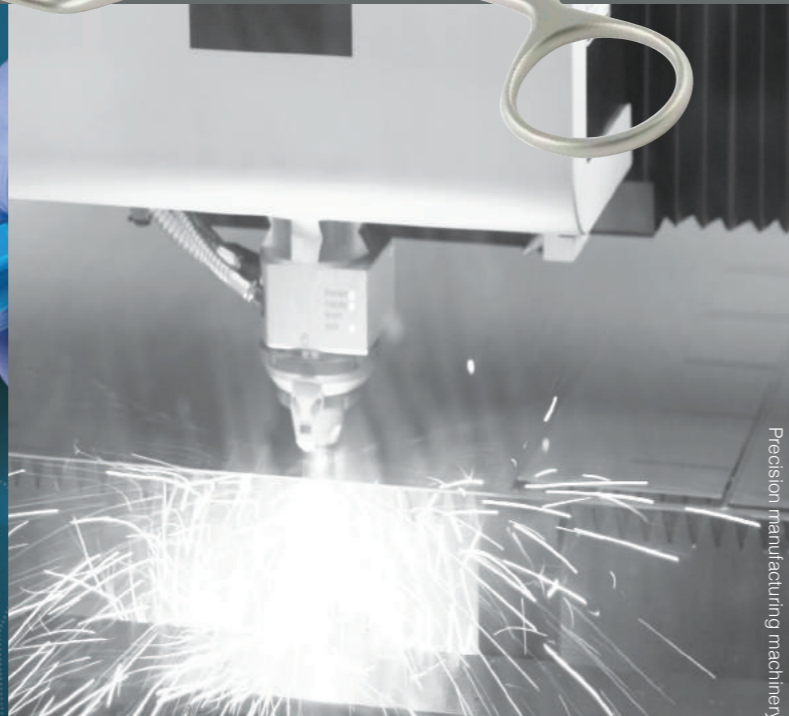


ReproBone® fusion

Stimulating bone repair through multiphasic activity.



Stimulate
Integrate
Regenerate



Precision manufacturing machinery

World Leading Academics



Stimulate
Integrate
Regenerate



Our hotbed of activity is underpinned by an academic community attracting over 7,000 undergraduates studying Medical Technology, sport science and design related courses at Sheffield Universities.

Sheffield Teaching Hospital Trust is one of the largest in the UK recognised for its work in neurosciences, cancer and orthopaedics.

Through the AWRC's close links with the National Centre of Sports and Exercise Medicine, researchers will be able to work with the population of Sheffield and use local communities to explore and test the potential of new innovations and products developed.



Advanced Manufacturing and the medical technology sector is just one of our specialist areas, simply visit scrinvest.com to discover more sectors and services the Sheffield City Region Inward Investment team can support.

Our expertise is the foundation on which much of the UK's wealth creation is built.

Medical Technology SECTOR IN THE SCR

75 BUSINESSES **1,900** employed
7,000 STUDYING Medical Technology, sport science & design related courses at Sheffield Universities.

Apprenticeships

Health and Social Care 3,860
Manufacturing Technologies 2,030
Science 10 (in 2014/15)

The region provides exceptional access to **CLINICAL TRIALS**.

The region's companies supply into the UK's National Health Service

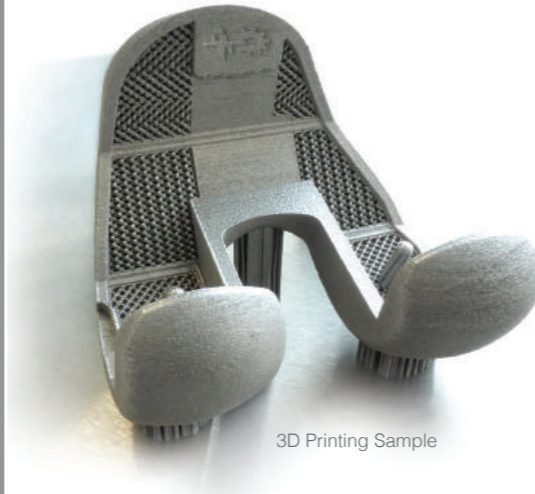
Sheffield Teaching Hospital Trust,

one of the largest in the UK

recognised for its work in neurosciences, cancer and orthopaedics.

Sheffield Teaching Hospitals NHS Foundation Trust, one of the UK's 1st Academic Health Science NETWORKS

Products and companies have world-wide recognised accreditations for exporting to over **50** countries.



3D Printing Sample

Connectivity and Certainty

The Sheffield City Region serves the supply chains of international manufacturing and engineering market sectors. It is made up of nine local authority districts which are a natural economic growth area. The region shares tremendous practical assets including Enterprise Zones, a fast-growing airport, key transport routes, a skilled flexible workforce and is a great place to live.

The region has won devolved powers from central Government and a £1.25 billion budget to spend. So we decide how to spend that budget in the best way for this region. Together these assets make a powerful case for investing here.



Olympic Legacy Park

World Class Support System

If you are looking to invest or locate your business here in the Sheffield City Region we offer you a tailored 'can-do' approach.

Our specialist team can help identify appropriate property and business locations, link you into our supportive commercial environment. We work with you to attract and build a well-qualified and committed workforce.

- Research Support – applying excellent local industry, demographic and sector profiling analysis
- Property Search – Finding the right property and appropriate knowledge neighbours
- Networks – Introductions and advice surrounding local businesses, universities and organisations'
- Sourcing Recruitment – including advice regarding training subsidies, training and development
- Access to funding – advice on Enterprise Zone incentives and support to access skill funding or raise external finance
- R&D Tax Relief – advice on Research and Development Tax Credits and Patent Boxing

Advanced Manufacturing and the medical technology sector is just one of our specialist areas, simply visit scrinvest.com to discover more sectors and services the Sheffield City Region Inward Investment team can support.

A wide and inspiring range of businesses in the Sheffield City Region are working with our leading universities, and collaboratively with each other, to research, trial, and produce medical technologies which will benefit mankind.



This region is outward looking and enthusiastic about collaboration and joint working: businesses are able to call on unrivalled expertise in research and development on their own doorstep.

The work of the **AWRC** is vital, it brings innovation and technology to life to have a direct impact on the population, to encourage greater levels of activity and not only improves healthy lifetimes, but also has huge positive impact on communities and commerce.

The **Medical AMRC** combines cutting edge manufacturing technologies with world-class research, design and development, its core capabilities include medical device R&D, design for manufacture, mechanical, industrial and electrical design, materials development, 2D and 3D visualisation and prototyping.

Projects have included innovative operating theatre instrumentation design, creation of intellectual property and orthopaedic implant design, using state of the art manufacturing. The range of sectors in this world is similarly impressive: we are home to manufacturers of medical instruments, medical devices, diagnostic technology and wearable healthcare technology.



JRI ORTHOPAEDICS

JRI Orthopaedics Limited is an award-winning company with expertise in the design, development and manufacture of orthopaedic implants and surgical instruments. It was the first in the world to develop and innovative ceramic coating on hip replacements which has helped over 250,000 patients. JRI is owned by Orthopaedic Research UK: the majority of its profits fund orthopaedic research and clinician education.
JRI-LTD.com

ORCHID ORTHOPEDIC SOLUTIONS

Orchid Orthopedic Solutions is a world leading, medical device, contract design and manufacturing company. It offers a range of services including design, manufacture, plastics technologies and implant bone in-growth coatings.
orchid-ortho.com

SWANN-MORTON

Swann-Morton has been creating surgical blades and handles since the end of the Second World War and today is the world leader in the production of quality surgical blades, scalpels and handles. The company shares are held in two trusts: a charitable foundation and an employees' benefit trust to protect the welfare of the company's employees in line with its founding philosophy.
swann-morton.com

DENCRAFT

Dencraft is an award-winning specialist in crown, bridge and implant production. It specialises in making natural-looking restorations which use cutting-edge technology alongside traditional artistry. These items are custom-made medical devices, and each one is unique.
dencraftuk.com

FRIPP DESIGN AND RESEARCH

An innovative solution to the problem of making soft tissue prostheses has been developed by Fripp Design and Research and the University of Sheffield with the support of the Wellcome Trust. Fripp Design used its expertise in 3D printing, materials technology, and individual design, and applied this to healthcare. The adaptation of current 3D print/rapid prototyping technologies to the rapid manufacture of soft tissue prostheses can have a huge impact on patients: there are no invasive impressions needed, turnaround times are dramatically reduced, replacements can be provided at the press of a button, and there is consistency in the quality of the manufacture prosthesis.
frippdesign.co.uk

SHEFFIELD ORTHODONTIC LABORATORIES

Sheffield Orthodontic Laboratories is one of the longest established laboratories in the field and has invested in the latest equipment and dental scanning technologies. The company works with GPs and orthodontists throughout the UK and globally. Examples of its products include Lynx Sports, colourful mouth guards which provide the highest level of protection and comfort for sportsmen and women.
Orthounlimited.com

PLATTS AND NISBETT

Platt and Nisbett is renowned for the manufacture of high quality surgical instruments. The company supplies instruments to the NHS, private sector hospitals and decontamination units, and also make made-to-measure products. All its products are manufactured in Sheffield, and it is also the only UK manufacturer of veterinary instruments.
plattsnisbett.com

CERAMISYS LIMITED

Ceramisis is a leading international biomaterials manufacturer which works with renowned research institutions. It specialises in the manufacture and development of implantable synthetic grafts for bone repair and ocular surgery. Its Ceramys ReproBone® hand is made from implantable synthetic bone graft which is an ideal scaffold to support and promote bone repair before it eventually dissolves in the body.
Ceramisis.com

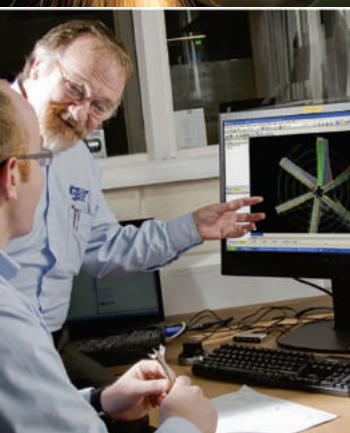
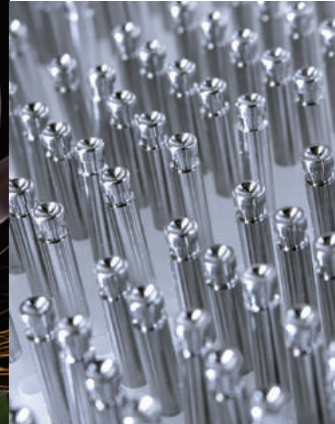
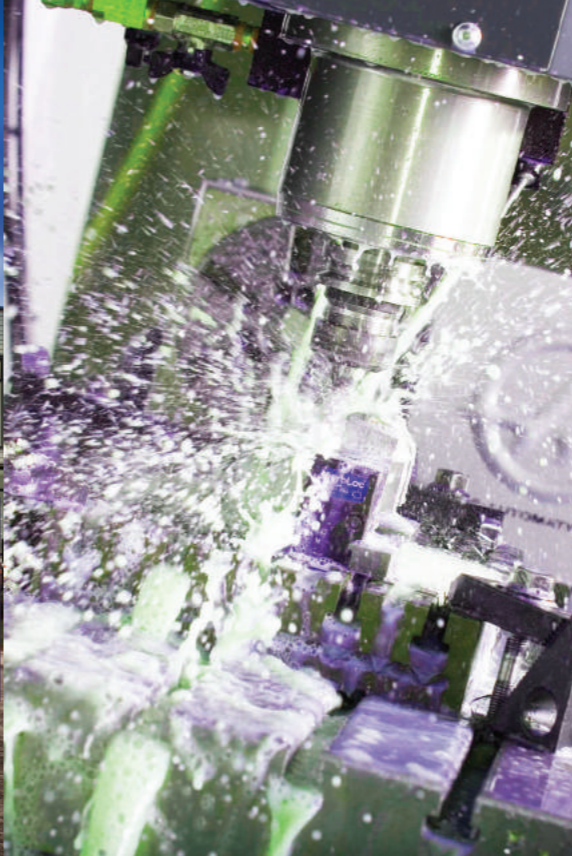
SHEFFIELD PRECISION MEDICAL

Sheffield Precision Medical is the leading UK Orthopaedic Instrumentation solutions provider. Developed a global reputation for partnering with OEM implant manufacturers. Core to success is their dedicated manufacturing and design teams 'fast track' manufacturing solutions for developing new products from concept through to volume production. Delivering solutions for specific items through to complete instrument sets. Using the latest technology both in the design and manufacturing process they are always looking to drive down costs bringing real savings for customers.
sheffieldpm.co.uk

Further information on the businesses and their products and services can be found on scrinvest.com



Testing ground for commercial projects and proposals in the heart of the UK



The Sheffield City Region supports the medical technology sector from research through to commercialisation. We firmly believe in the strengths of this sector, and its vitally important supply chain.

“Long-term economic growth requires a sustainable and predictable investment environment to support investors, bolster businesses, improve infrastructure, and build and nurture vibrant communities.

North of London with excellent road, rail and air connectivity, as well as vast opportunities for new build, supported by a well-educated and skilled workforce, the Sheffield City Region has a devolution-of-power deal unlike anything else available in the UK. It creates economic certainty for decades to come in the heart of England.”

Sir Nigel Knowles
Chair, Sheffield City Region Local Enterprise Partnership



At our heart are world-leading academics whose research and collaboration means that many life-saving, life-enhancing technologies and tools have been created and commercialised in this region.

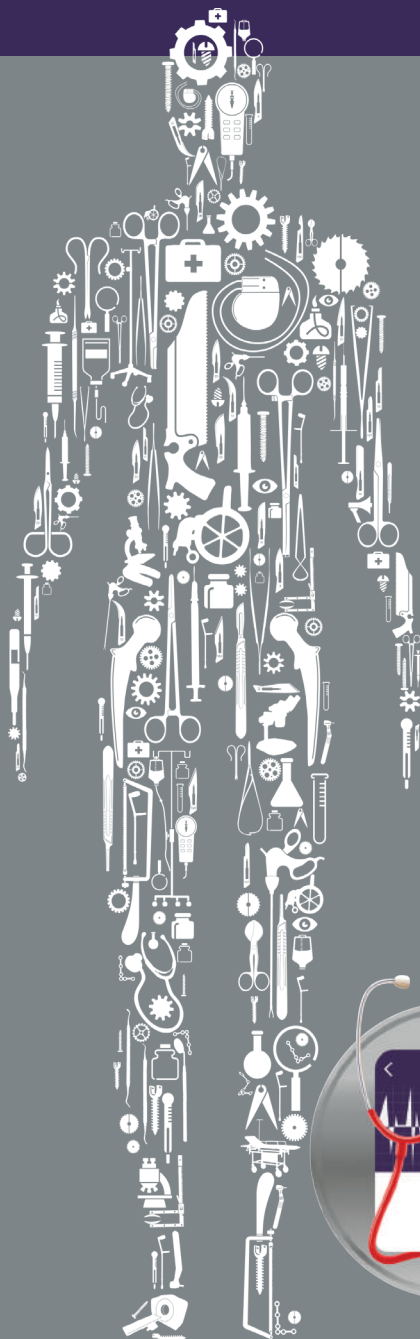
We have a proud heritage of skills in advanced metal technologies. Together with a strong spirit of innovation and a straightforward approach to getting things done, we attract many major institutions here to do business.

The demographics of Sheffield match wider UK demographics, therefore making the Sheffield City Region an ideal test bed for conducting research and development.

Region’s flair for invention and determination to succeed

The Sheffield City Region's works collaboratively with healthcare providers, universities and businesses, to identify and champion key strategic projects that unlock and accelerate growth and to raise the profile of Sheffield City Region's expertise and distinctive offer for developing healthcare solutions.

Contact a medical technology sector specialist today to discuss your plans and how we can help.



Medical Technology SECTOR IN THE SCR

75 BUSINESSES **1,900** employed
7,000 STUDYING Medical Technology, sport
science & design related courses at Sheffield Universities.

Apprenticeships

Health and Social Care **3,860**
Manufacturing Technologies 2,030
Science 10 (in 2014/15)

The region provides
exceptional access
to **CLINICAL TRIALS**.

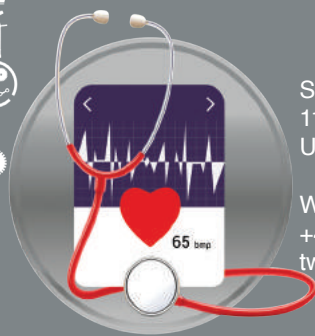
The regions companies supply into the UK's National Health Service

Sheffield Teaching Hospital Trust,
one of the largest in the UK
recognised for its work in neurosciences, cancer and orthopaedics.

Sheffield Teaching Hospitals
NHS Foundation Trust,
one of the UK's 1st
Academic Health Science

NETWORKS

Products and companies have
world-wide recognised
accreditations for exporting
to over **50** countries.



Sheffield City Region Inward Investment,
11 Broad Street West, Sheffield,
United Kingdom, S1 2BQ

W: scrinvest.com, E: enquiries@scrinvest.com,
+44 (0)114 220 3444
twitter.com/scrinvest scrinvest.com

**Sheffield
City Region**
Inward Investment